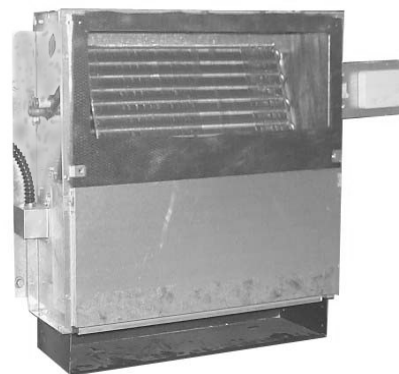
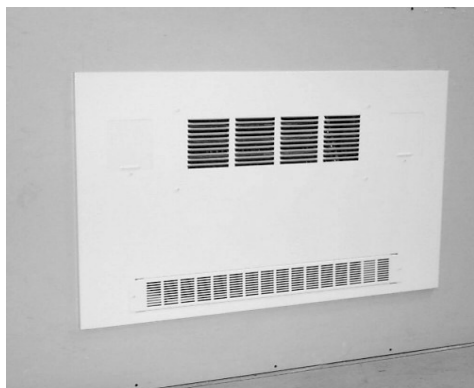


300 THROUGH 1,200 CFM



(Shown with optional unit mounted thermostat)

Table of Contents

Features	2
Control Options	3
Perormance Data	4
Cooling Coil Ratings	5
Nomenclature	6
Specifications	7
Guide Specifications	8



Recessed Wall Console . . . By AE-Air ***Quiet, Attractive, Versatile***

AE-Air's "**AWCB**" series Recessed wall consoles are slim and extremely attractive. Their pleasing appearance allows them to blend with any decor. These products are engineered to be quiet and designed to be easy to install and service.

These units are ideal for perimeter heating and cooling in hotels, apartments, hospitals, public office buildings, offices, corridors, and other multi-room buildings.

They are available in 6 sizes with airflow from 300 through 1200 CFM to supply just the right amount of air. Available coils include 3 and 4 rows for 2-pipe systems, and 31, 41 (300-800 CFM only) split coils for 4-pipe systems.

Features / Benefits

Cabinets

All units are constructed of heavy gauge galvanized steel to resist corrosion.

Decorative Wall Panel

Each unit is shipped with a decorative wall panel. The wall panel is fabricated of heavy gauge embossed galvanized steel and powder coated with a baked-on off-white finish. If desired, the wall panel can be field-painted to match an existing color. Service access to the **AWCB** unit is from the front after removing the wall panel. The wall panel includes both right and left hand thermostat access doors with tamperproof screws. In addition, each panel includes a removable return air grille to allow access to the permanent filter without removal of the entire wall panel.

Coils

Coils are available in standard and high capacity configuration and all include manual air vents. Optional water heating coils are available for 4-pipe systems.

Coils are constructed of seamless copper tubing expanded to high efficiency aluminum fins to assure maximum heat transfer.

Each coil is factory tested to 350 psig.

Drain Pans

The primary drain pan is constructed of galvanized steel and coated with a closed cell, fire retardant foam insulation to resist corrosion. This pan extends under the entire coil and coil headers. An injection molded secondary drain pan provides complete condensate drainage from the primary pan and is located under the valve package (if provided). Secondary drain pan can be rotated 180 degrees to allow field piping to enter the unit from different locations.

Motors

Standard motors are 120V, three speed, PSC type with internal thermal overload protection. Motors have permanently lubricated sleeve bearings for long life. All motors are resiliently mounted with rubber bushings to assure quiet, vibration-free operation and are easily removed.

Blower Assemblies

All blower wheels are centrifugal, forward curved, and dynamically balanced for smooth, quiet operation.

Blower assemblies can be easily removed for service.

Filters

A 1/2 inch permanent filter is provided as standard on all units. The filter is easily removed from the front of the unit.

Single Power Location

All electrical components are factory wired to a single electrical compartment on each unit. All field wiring connections are made at this electrical compartment.

Options

A wide variety of two and four-pipe control systems are available with unit mounted or remote thermostats. Standard options include valve cycle control systems and a factory installed service switch. Other options include three speed switches, various motor voltages, and manual or motorized fresh air damper. See "Model Number Nomenclature" on Page 6 for unit options and Page 3 for control options.

Fresh air wall box is fabricated of aluminum with drain holes and a double set of louvers in series to prevent moisture draw through.

Thermostat Options For Available Electric Valve Packages

THERMOSTAT OPTIONS FOR ELECTRIC VALVE PACKAGES					
2 Pipe - Valve Cycle		All thermostat options include 3 speed switches			
SYSTEM	THERMOSTAT CONTROLS	CONTROL VALVE TYPE	CHANGEOVER CONTROL and LOCATION	THERMOSTAT TYPE	ORDER OPTION NUMBER
Heating and Cooling	Heat-Off-Cool Constant Fan Hi-Med-Low	Motorized 2-way or 3-way Normally closed.	Manual Heat-Cool Switch on Thermostat	Unit Mount	A1
				Wall Mount	A2
				Unit Tamperproof	A3
	On-Off Constant Fan Hi-Med-Low	Motorized 3-way Normally Closed	Automatic (1) Aquatstat - Factory Mounted on Supply Line	Unit Mount	B1 (2)
				Wall Mount	
				Unit Tamperproof	
Cooling Only	On-Off Constant Fan Hi-Med-Low	Motorized 2-way or 3-way Normally Closed	None	Unit Mount	D1
				Wall Mount	D2
				Unit Tamperproof	D3
Heating Only	On-Off Constant Fan Hi-Med-Low	Motorized 2-way or 3-way Normally Closed	None	Unit Mount	E1
				Wall Mount	E2
				Unit Tamperproof	E3
4 Pipe - Valve Cycle					
SYSTEM	THERMOSTAT CONTROLS	CONTROL VALVE TYPE	CHANGEOVER CONTROL and LOCATION	THERMOSTAT TYPE	ORDER OPTION NUMBER
Heating and Cooling	Heat-Off-Cool Constant Fan Hi-Med-Low	Motorized 2-way or 3-way Normally Closed	Manual Heat-Cool Switch on Thermostat	Unit Mount	M1
				Wall Mount	M2
				Unit Tamperproof	M3
	On-Off Constant Fan Hi-Med-Low	Motorized 2-way or 3-way Normally Closed	Automatic (1) 4 deg. Neutral Dead Band for sequenced heating & cooling, DPDT	Unit Mount	N1
Wall Mount				N2	
Unit Tamperproof				N3	
3-SPEED FAN SWITCH ONLY					
				SWITCH TYPE	ORDER OPTION NUMBER
				Unit Mount	L1
				Wall Mount	L2
				Unit Tamperproof	L3

NOTES:

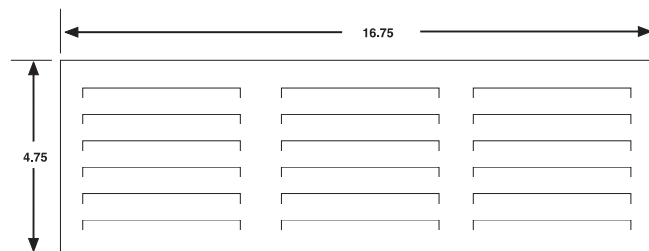
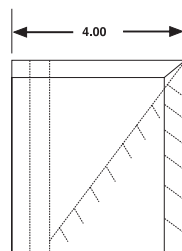
1. B1 option includes factory installed aquastat.
2. If valve package is desired with "B" options, select valve package number "3D".
3. Use "NC" for no controls.
4. Contact factory for other valve package options.

Fresh Air Wall Box

UNIT SIZES 10 & 12

Require two fresh air wall boxes.

NOTE: Outside fresh air must be tempered before entering the unit if freezing conditions are expected.



Air Volume Capacity

UNIT		CFM @ 0.0 E.S.P. FOR FAN SPEED INDICATED			HIGH SPEED CFM @ E.S.P. INDICATED			
MODEL	SIZE	HIGH	MED	LOW	0.05	0.10	0.15	0.20
AWCB	3	280	245	210	255	230	205	175
	4	400	320	220	370	330	290	240
	6	600	430	320	570	540	510	480
	8	800	680	580	760	730	700	660
	10	1000	880	670	970	920	880	830
	12	1220	1030	780	1170	1120	1070	1020

Notes:

1. Values are standard CFM at sea level, 70 degree EAT. with dry coil.
2. E.S.P. - inches water.
3. Values include filter and / or grille where applicable.

Motor Data

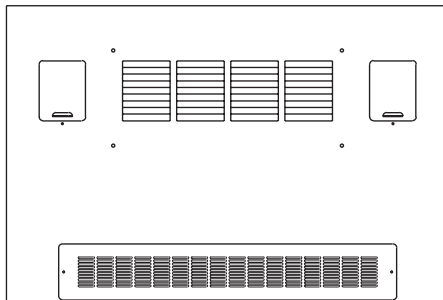
MOTOR SPEED	UNIT SIZE											
	3		4		6		8		10*		12*	
	NOMINAL HP 1/20	Amps	NOMINAL HP 1/12	Amps	NOMINAL HP 1/8	Amps	NOMINAL HP 1/6	Amps	NOMINAL HP 1/8 (2)	Amps	NOMINAL HP 1/6 (2)	Amps
	Watts	Watts	Watts	Watts	Watts	Watts	Watts	Watts	Watts	Watts	Watts	Watts

120 VOLT - 1 PH - 60 Hz PSC MOTOR

HIGH	.80	.95	1.0	1.05	1.8	200	2.2	250	3.0	350	4.6	520
MEDIUM	.45	60	.60	70	1.1	140	2.0	210	2.4	275	3.0	330
LOW	.40	50	.45	55	.80	90	1.6	170	1.8	210	2.1	230

Notes:

- * Total unit motor amps and watts shown for 2 motors. (Unit size 10 and 12)


Wall Panels for AWCB

	HEIGHT	WIDTH
9PWC03L	30"	44"
9PWC04L	30"	52"
9PWC06L	30"	60"
9PWC08L	30"	68"
9PWC10L	30"	76"
9PWC12L	30"	84"

Shipping Weights
Approximate shipping weights (lbs.)
Note:

1. Approximate shipping weights do not include valve packages, hot water coils, electric heaters, or other options.

UNIT TYPE	UNIT SIZE					
	3	4	6	8	10	12
AWCB	85	97	110	125	145	165

ARI Standard Ratings

Cooling Coil Ratings

Standard Coil - Water Cooling Capacity Ratings - 3 row

UNIT SIZE	COOLING CAPACITY		GPM	WATER P.D. (Ft. Wtr.)
	TOTAL BTUH	SENSIBLE BTUH		
3	8,000	6,100	1.6	4.5
4	12,000	9,000	2.4	9.3
6	17,000	12,900	3.4	8.3
8	21,900	16,800	4.4	8.6
10	27,600	22,500	5.5	9.3
12	34,500	27,500	6.9	15.1

High Capacity Coil - Water Cooling Capacity Ratings - 4 row

UNIT SIZE	COOLING CAPACITY		GPM	WATER P.D. (Ft. Wtr.)
	TOTAL BTUH	SENSIBLE BTUH		
3	9,200	6,700	1.8	5.4
4	13,900	9,900	2.8	14.9
6	19,000	14,000	3.8	11.8
8	25,400	18,700	5.1	13.8
10	30,400	23,700	6.1	9.5
12	38,200	29,100	7.6	14.1

Notes:

1. Rated in accordance with ARI Standard 440. Cooling capacities based on 80 deg. DB / 67 deg. WB entering air, 45 deg. entering water, 10 deg. water temperature rise and high fan speed with standard 120V/1PH/60Hz motor.
2. For cooling coil capacities at conditions other than listed, refer to application guide or consult your First Co. Representative.

Heating Coil Ratings

Standard Coil - Water Heating Capacity Ratings - 3 row

UNIT SIZE	HEATING CAPACITY BTUH	GPM	WATER P.D. (Ft. Wtr.)
3	23,500	1.6	4.5
4	34,200	2.3	8.6
6	49,400	3.3	7.8
8	64,500	4.3	8.2
10	87,000	5.8	10.4
12	106,300	7.1	15.9

High Capacity Coil - Water Heating Capacity Ratings - 4 row

UNIT SIZE	HEATING CAPACITY BTUH	GPM	WATER P.D. (Ft. Wtr.)
3	25,200	1.7	4.8
4	36,600	2.4	11.3
6	52,500	3.5	10.2
8	69,500	4.6	11.5
10	92,200	6.1	9.5
12	113,000	7.5	13.7

1-Row Coil - Water Heating Capacity Ratings

UNIT SIZE	HEATING CAPACITY BTUH	GPM	WATER P.D. (Ft. Wtr.)
3	12,400	0.8	2.4
4	18,200	1.2	6.1
6	26,000	1.7	12.7
8	33,700	2.2	22.7
10	33,600	2.2	5.9
12	41,200	2.7	8.8

Notes:

1. Heating coils rated at 70 deg. DB entering air, 180 deg. entering water, 30 deg. water temperature drop and high fan speed with standard 120V/1PH/60Hz motor.
2. For heating capacities at conditions other than listed, consult your AE-Air Representative or the factory.

Model Number Nomenclature

12 AWC B 0 - 126 - 31 R - 2B - N1

Thermostat Options

(see Page 3)

NC = No Controls

2 pipe

- NV - No valves
- BV - Ball valves (two)
- 2 - 2 Way valve (volt) - no ball valves
- 2B - 2 Way valve (volt) - (2) ball valves

- 3 - 3 Way valve (volt) - no ball valves
- 3B - 3 Way valve (volt)- (2) ball valves
- 3C - 3 Way valve (volt)- (1) ball & (1) circuit setter
- 3D - 3 Way valve (volt)- (2) ball valve & aquastat

4 pipe

- NV - No valves
- BV - ball valves (four)
- 2 - (2) 2 Way valves (volt) - no ball valves
- 2B - (2) 2 Way valves (volt) - (4) ball valves
- 3 - (2) 3 Way valves (volt) - no ball valves
- 3B - (2) 3 Way valves (volt) - (4) ball valves
- 3C - (2) 3 Way valves (volt) - (2) ball valves - (2) circuit setters
- 7B - (1) 3 Way valve (volt) cooling coil - (2) ball valves
- (1) 2 Way valve (volt) steam coil - (2) ball valves

CFM (100'S)

3,4,6,8,10,12

Unit Style

AWC - Recessed wall console

Vintage

Unit Voltage

- 126 - 120V-1PH-60Hz
- 246 - 208/240V-1PH-60Hz
- 225 - 220V-1PH-50Hz
- 276 - 277V-1PH-60Hz

Coil Type

- 3 - 3 row
- 4 - 4 row
- 31 - 3 row cool, 1 row heat
- 41 - 4 row cool, 1 row heat (available on 300-800 CFM only)

Coil Connection

- R - Right Hand (Facing Unit Front)
- L - Left Hand

Valve Package

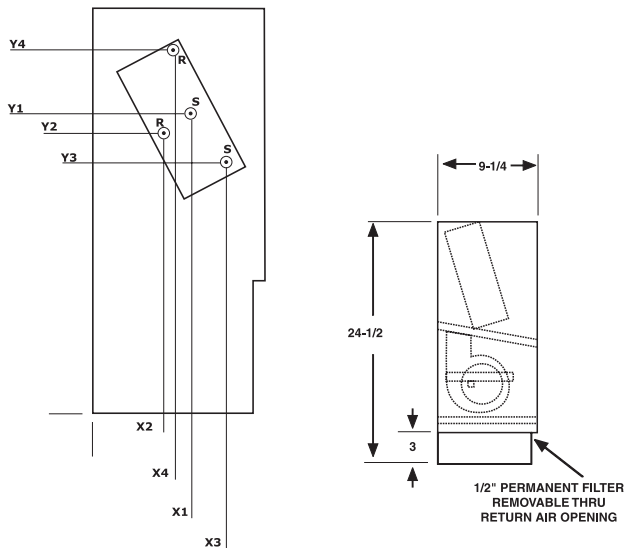
(Contact factory for options)

NOTES:

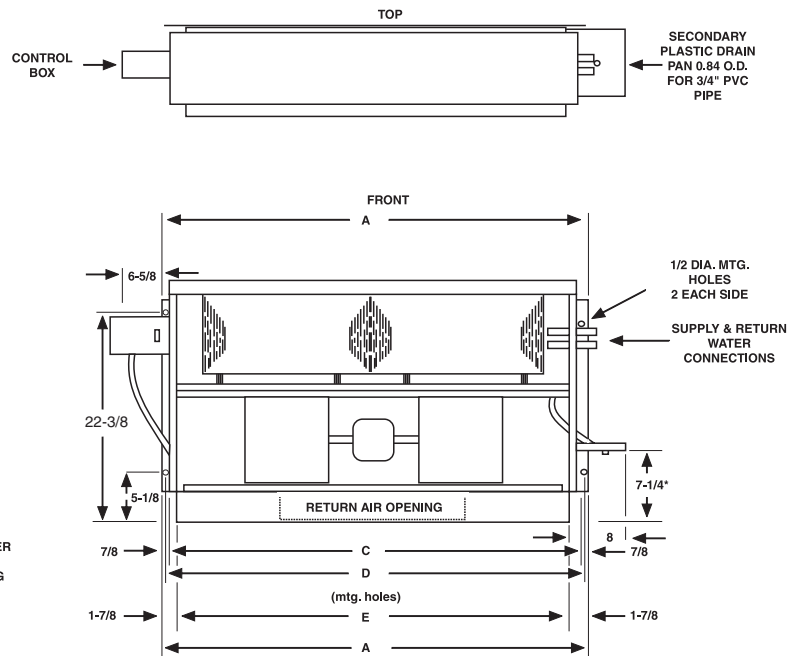
- 1) ALL DIMENSIONS IN INCHES.
- 2) COIL CONNECTION TOLERANCE ± 1/4"
- 3) HAND OF UNIT DETERMINED BY COOLING COIL CONNECTION WHEN FACING THE FRONT OF UNIT.



GENERAL DIMENSIONS						
MODEL	A	C	D	E	COIL CONN SIZE	
					COOLING	HEATING
3AWCB	27-1/2	25-1/2	26-1/2	23-3/4	5/8 O.D. SWEAT	5/8 O.D. SWEAT
4AWCB	35-1/2	33-1/2	34-1/2	31-3/4		
6AWCB	43-1/2	41-1/2	42-1/2	39-3/4		
8AWCB	51-1/2	49-1/2	50-1/2	47-3/4		
10AWCB	59-1/2	57-1/2	58-1/2	55-3/4		
12AWCB	67-1/2	65-1/2	66-1/2	63-3/4		



(LEFT HAND UNIT SHOWN)



* DIMENSIONS VARY FOR UNITS WITH NON-STANDARD VALVE PACKAGES.

AWCB HEADER LOCATIONS									
	LEFT HAND	X1	Y1	X2	Y2	X3	Y3	X4	Y4
3-8AWCB	3 ROW	4.75	18.13	3.00	17.50	---	---	---	---
	4 ROW	5.50	18.50	3.00	17.50	---	---	---	---
	3/1 ROW	4.63	18.13	3.13	17.50	7.00	15.13	4.13	21.50
	3/2 ROW	4.63	18.13	3.13	17.50	7.00	15.13	4.88	21.88
10-12AWCB	4/1 ROW	5.50	18.50	3.13	17.50	7.63	16.00	4.63	22.25
	3 ROW	5.25	18.13	3.25	17.25	---	---	---	---
	4 ROW	6.25	18.50	3.25	17.25	---	---	---	---
	3/1 ROW	5.38	18.13	3.25	17.25	7.63	15.50	5.00	21.13

AWCB HEADER LOCATIONS									
	RIGHT HAND	X1	Y1	X2	Y2	X3	Y3	X4	Y4
3-8AWCB	3 ROW	4.75	18.13	3.00	17.50	---	---	---	---
	4 ROW	5.5	18.50	3.00	17.50	---	---	---	---
	3/1 ROW	4.63	18.13	3.13	17.50	6.88	15.50	3.88	21.50
	3/2 ROW	4.63	18.13	3.13	17.50	7.63	15.88	3.88	21.88
10-12AWCB	4/1 ROW	5.50	18.50	3.13	17.50	7.75	15.50	4.88	21.88
	3 ROW	5.25	18.13	3.25	17.25	---	---	---	---
	4 ROW	6.25	18.50	3.25	17.25	---	---	---	---
	3/1 ROW	5.38	18.13	3.25	17.25	7.38	16.00	4.75	21.75

Furnish and install Applied Environmental Air vertical floor consoles as indicated on the plans and specifications. Types, sizes, and performance shall be as indicated in the schedule.

General

Series **WCB** cabinet shall be fabricated of heavy gauge galvanized steel. Supply air and return air shall both be through a decorative wall panel attached to the front of the unit. Unit cabinet shall be stud mounted into a sealed space to ensure that all return air comes from the conditioned area through the wall panel. Service is to be performed from the front of the unit after removal of the wall panel.

Decorative Wall Panel

Each unit shall have a factory supplied decorative wall panel. The wall panel shall be fabricated of heavy gauge embossed galvanized steel and coated with a baked-on off-white finish. If desired, the wall panel can be field-painted to match an existing color. Service access to the WCB unit shall be accomplished by removal of the wall panel. Each wall panel shall include both right and left hand thermostat access doors with tamperproof screws. Each panel shall include a removable return air grille to allow access to the permanent filter without removal of the entire wall panel.

Electrical

Unit shall have an electrical box providing a single location for all field wiring connections and a factory installed electrical Service Switch.

Coils

Coils shall have high efficiency aluminum fins with mechanically expanded copper tubes. All water coils shall have a manual air vent. Coil performance shall be as indicated in the schedule.

Fan Assembly

Fans shall be centrifugal, forward curved, and dynamically balanced for smooth, quiet operation. Fan housing shall be fabricated of heavy gauge galvanized steel and be easily removed, thus allowing complete service access to the fans and motors.

Motors

All units shall have (120/1/60) (208-240/1/60) (220/1/50) three speed motors with permanently lubricated sleeve bearings, permanent split capacitor, inherent thermal overload protection with automatic reset, and resilient rubber motor mounts.

Speed Control (optional)

Units shall have a (unit) (wall) mounted three speed switch with integral on/off switch which shall provide high / medium / low fan speed control.

Drain Pan

Primary drain pan shall be constructed of galvanized steel and coated to resist corrosion. Secondary drain pan shall be constructed of injection molded plastic. Secondary drain pan shall be capable of rotating 180 degrees to allow field piping to enter the unit from different locations.

Insulation

Cabinet insulation shall be 1/2" multi-density glass fiber.

Filter

Filter shall be permanent type and cleanable.

Options

Valve Packages - Valve packages shall consist of various combinations of 2-way or 3-way motorized valves and/or combination balance/shut-off valves on the supply and return piping.

Fresh Air Kit - A manual or motorized fresh air damper shall be provided by the manufacturer for field installation. Tamperproof Access Door - Units shall be provided with tamperproof access door on the thermostat/fan control compartment.